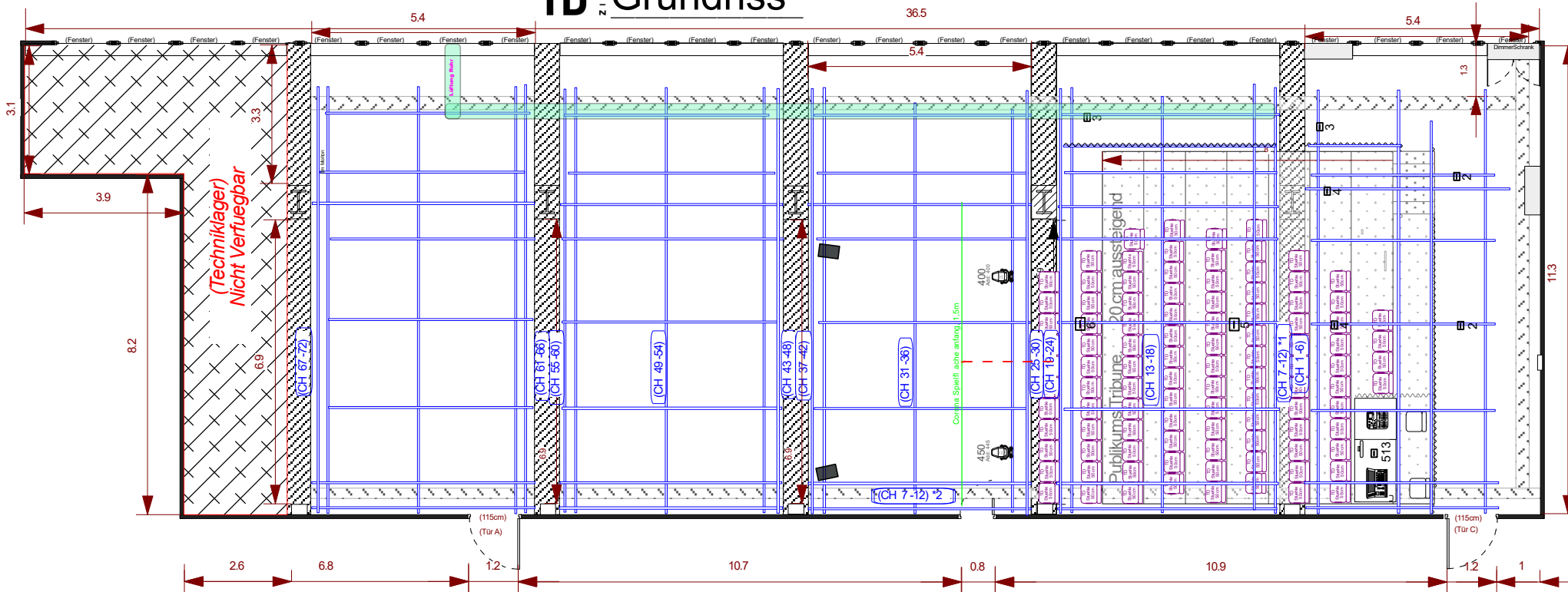
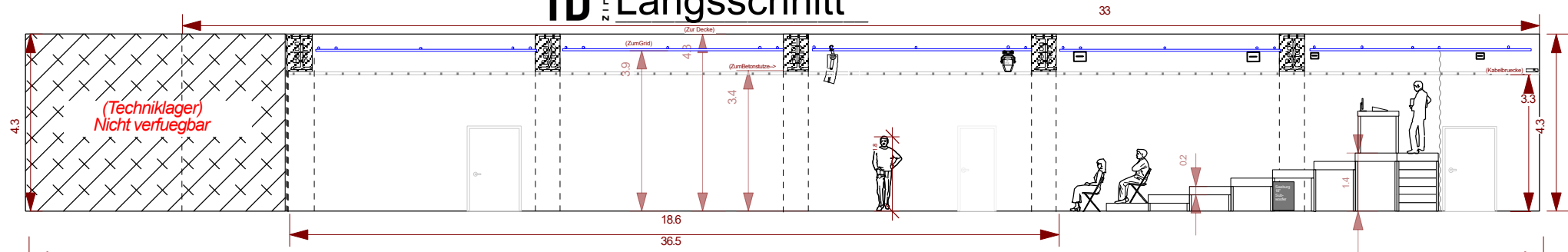


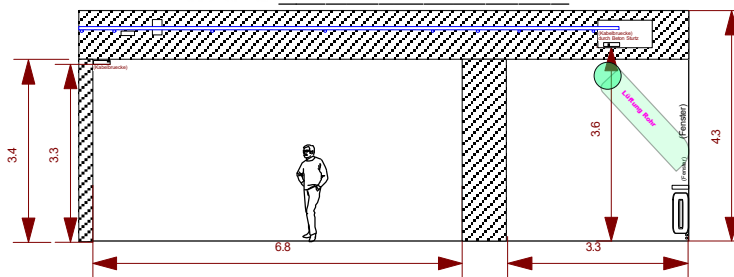
TD ZIFRARD Grundriss



TD ZIFRARD Längsschnitt



TD ZIFRARD Querschnitt

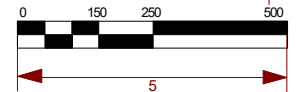


TD Beleuchtung Grundinventar:			
	JB Lighting P12 (HC)	(640 W)	2x
	ADB Fresnel F101, 13-53°	(1 kW)	20x
	ADB PC C103, 13-60°	(1 kW)	9x
	Source 4 Zoom, 25-50°	(575 W)	4x
	Source 4 Jr. zoom, 25-50°	(575 W)	4x
	ADB Warp Profiler, 12-30°	(800 W)	4x
	Niethammer HPS 100, 23°	(1 kW)	6x
	LED Par, steuertableuchte	RSB RAUV	7x
	Par 64 Long Nose	(1 kW)	14x
	Par 64 Short Nose	(1 kW)	12x
	Par 56	(500 W)	8x
	Pinpot, Par 36	(30 W)	14x
	Fluter, Ultralight Cyclo 1000	(1 kW)	6x
	Showtech Sunstrip	(700 W)	3x
	Leuchtstift Rohr, 1,2m		10x
	ADB Svoboda9 Kammer	(2250 W)	2x

Beamer Inventar:	
	PT M270 (8000Lumen) 1x
	PT VX 600 (5500 Lumen) 2x

Boden zum Kabelbrücke (R) = 360 cm
 Boden zum Sturz = 339 cm
 Boden zur Decke = 427 cm
 Boden zum Kabelkanal (L) = 329 cm

Sitzpläette: Flexible; bis zu 102



TD ZIFRARD	

Technik@td.berlin Scale: 1:140 Stand: 23.11.2021